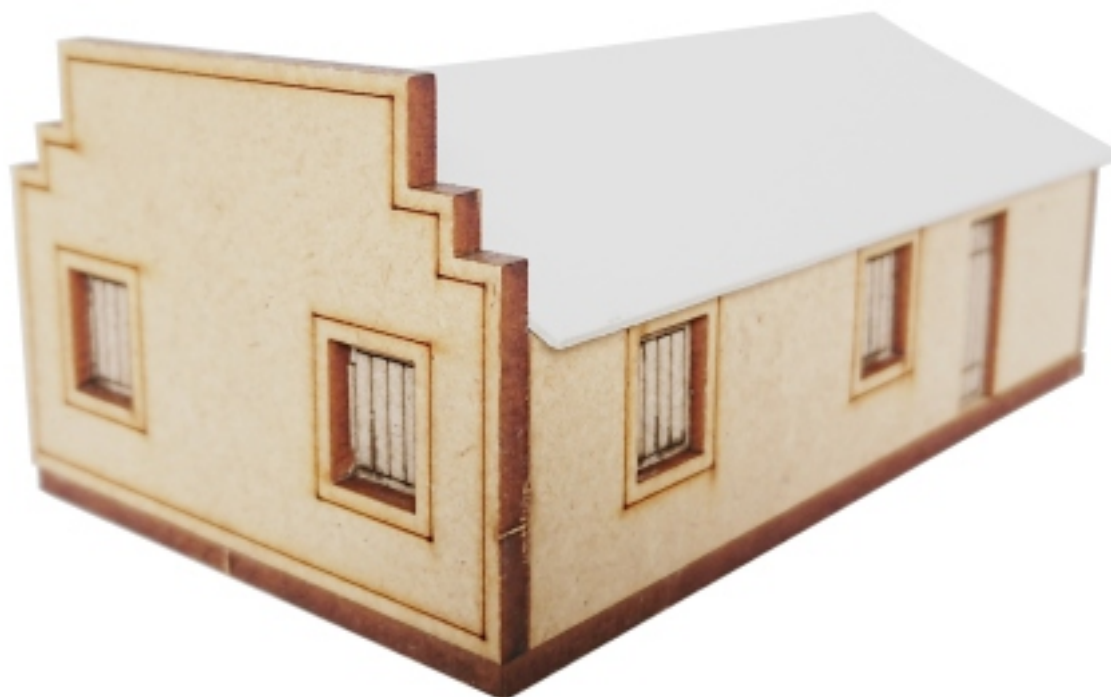




## **Manual de Montagem**

### **Casa B H0**

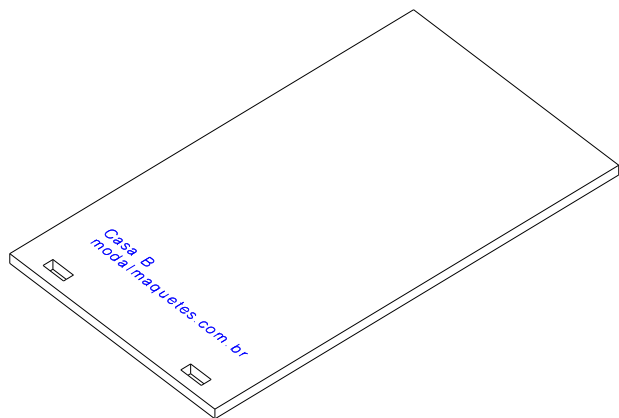




**Manual de Montagem**  
**Casa B HO**

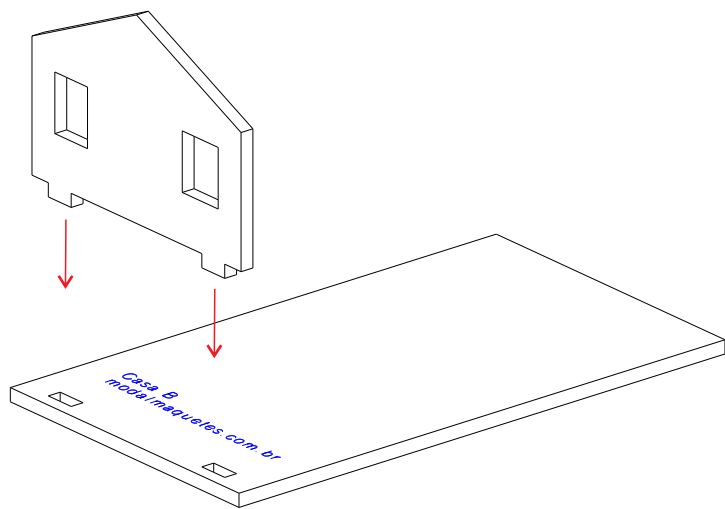
**Passo 1**

Separe a base de MDF de 3mm

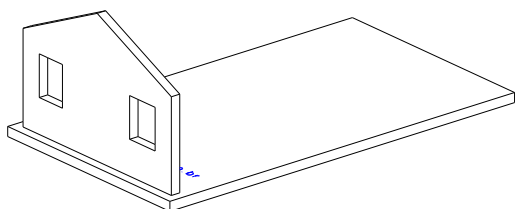


**Passo 2A**

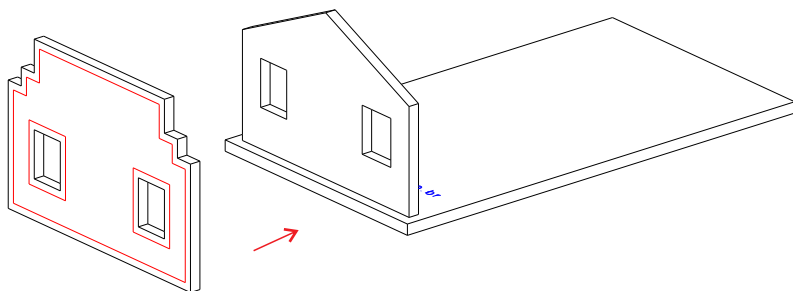
Use cola para madeira, permitirá o alinhamento no momento da colagem.



**Passo 2B**



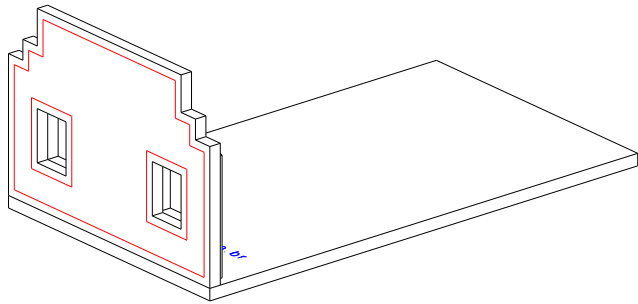
**Passo 3A**



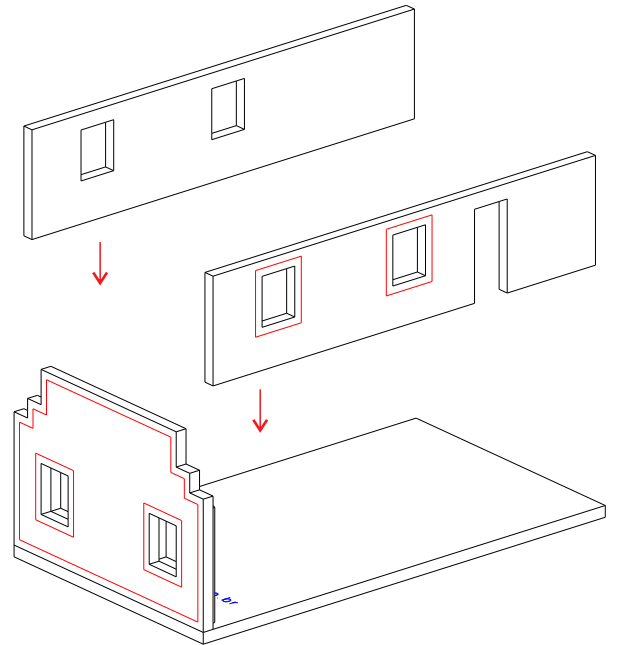


Manual de Montagem  
Casa B HO

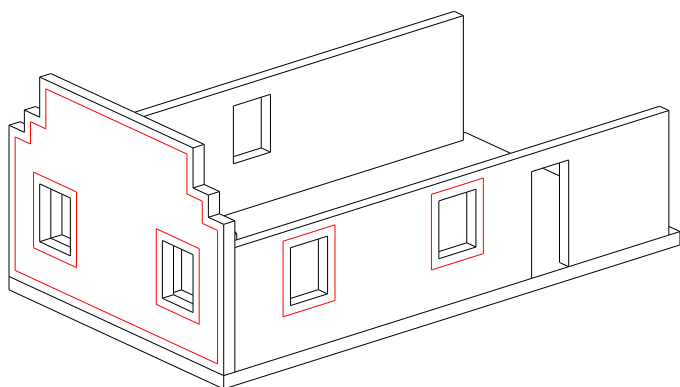
Passo 3B



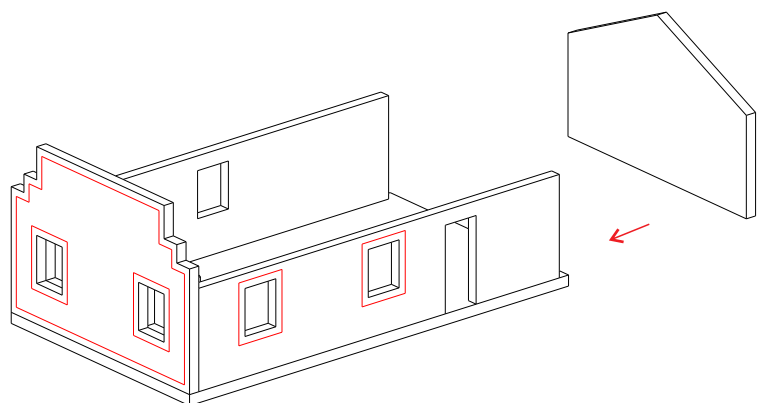
Passo 4A



Passo 4B

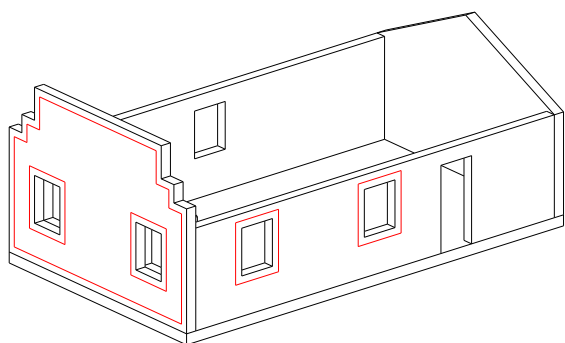


Passo 5A



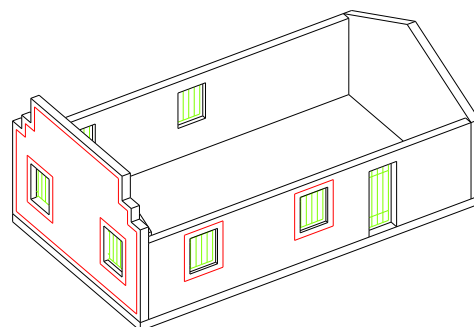
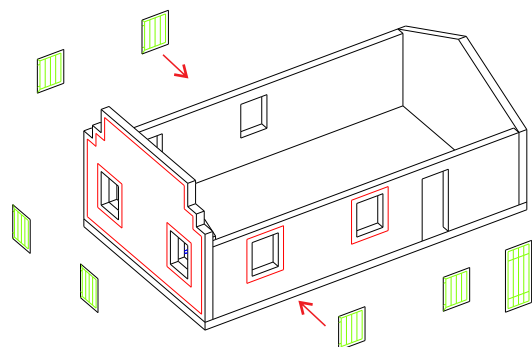
**Manual de Montagem**  
**Casa B HO**

**Passo 5B**



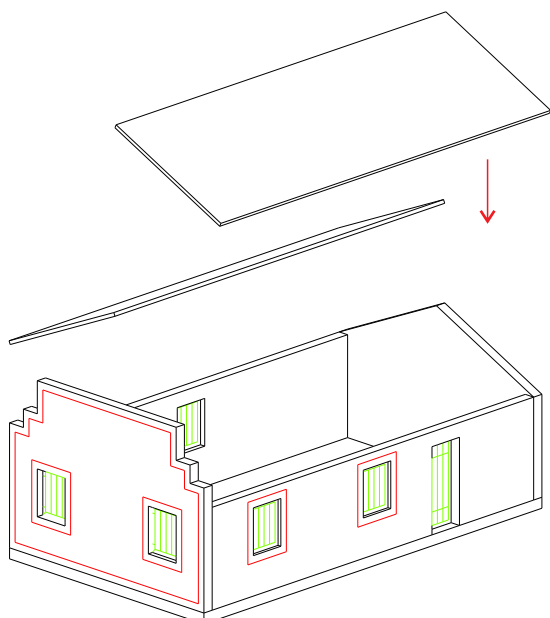
**Passo 6A**

As portas e janelas são feitas em papel rígido Holler  
Usar cola para madeira



**Passo 7A**

O telhado é formado por duas peças de poliestireno branco  
Colar com colar rápida de cianoacrilato



**Passo 7B**

